

# MST-7300B / MST-7300BX



## Mizuho Medical Co.,Ltd.

MIZUHO Building 3, 3-29-3 Hongo,  
Bunkyo-ku, Tokyo 113-0033, JAPAN

Phone +81-3-3815-7101  
F a x +81-3-3818-1705  
U R L [www.mizuhomedical.co.jp](http://www.mizuhomedical.co.jp)  
E-mail [marketing@mizuhomedical.co.jp](mailto:marketing@mizuhomedical.co.jp)




## MIZUHO Corporation

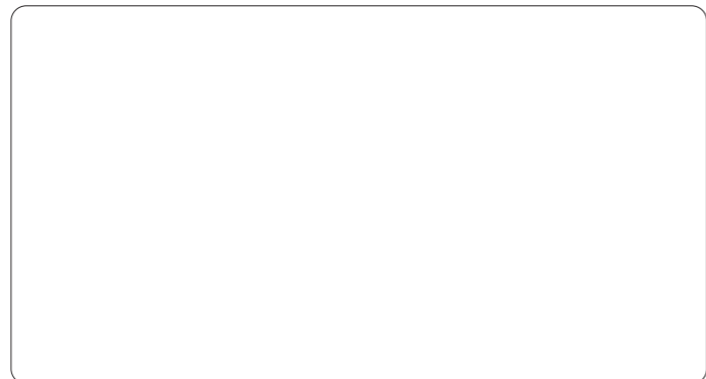
3-30-13 Hongo, Bunkyo-ku, Tokyo 113-0033, JAPAN  
<https://www.mizuho.co.jp>

\* Under our policy, ongoing improvements and published specifications may be subject to change without prior notice.  
\* All published CG photos and illustrations have been from images.  
©MIZUHO 2022

EC REP Emergo Europe B.V.  
Prinsessegracht 20, 2514 AP  
The Hague, The Netherlands



 Caution	<ul style="list-style-type: none"><li>• Do not use the product until you have carefully read the instruction manual and instructions for use and correctly understood their contents.</li></ul>
	<ul style="list-style-type: none"><li>• Periodic inspections are suggested before and after procedures.</li><li>• For questions or concerns about after-the-sale service, please inquire directly to technical service representative from your local dealer/distributor.</li></ul>



*Mizuho Mobile Microsurgery Table*

# MST-7300BX MST-7300B

# MST-7300

## The best choice for Microsurgery

Micro Surgery



### Mizuho Microsurgery Table Series

As the leading manufacture of operating tables, Mizuho has been providing state-of-the-art technology that offers an excellent performance and functionality for healthcare professionals since 1919.

To meet demands of recent advancement and development in Microsurgery, Mizuho has come up with newly developed Model MST-7300B / MST-7300BX.

### Lower than any other general table

A Jackknife (Z Shaped) elevation system provides the table lowest height as 400 mm for 7300B and 450 mm for 7300BX. which pursuit of the lower table position. While the best platform of microsurgery such as Brain tumor and Aneurysm surgeries yet it is provided with versatility to cope with surgery of a wide spectrum.



Comfortable Working Space



Spine Surgery



### Functional Expansion

The optional radiographic tabletop is made of a radiolucent carbon fiber material that allows for x-ray imaging during spinal procedures.

Variety of radiolucent accessories will expand capability and support your operation.



\* ProneView® is sold by Mizuho OSI

## More Features with 7300B and 7300BX



### Displays Real Time Information

Allowing precise monitoring of the table positioning



### Three Programmable Memory Positions

Easy to re-position



### Switchable Operating Speed

Two operating speeds, HIGH and LOW



### Touch Panel on Base

Displays the current status

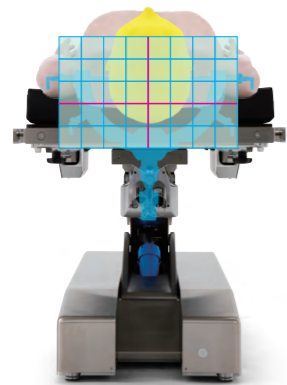


### Infrared Operation

Wireless / wired, dual mode hand controller



## More Features with 7300BX

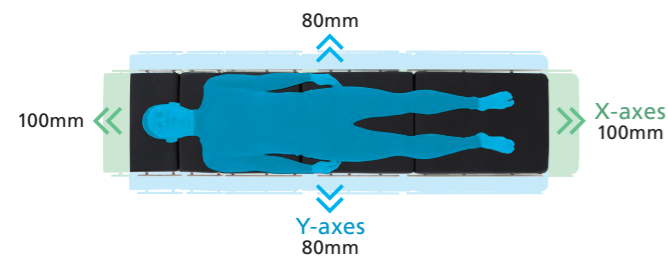


### ISO Center

A special structure to minimize the displacement of the surgical field on the patient head in lateral position intraoperatively.

### XY Slide

The table top can slide to the direction of X or Y axes.



## More Features with 7300B and 7300BX



### Allows for Optimum Positions

Five table top sections provide the most suitable positions that benefit both patients and users.



### 360 kg / 800 lbs. Weight Capacity

Inconsideration of obese patients.



### Prevention Function

The internal sensors prevent the table top from touching the floor or the table base.



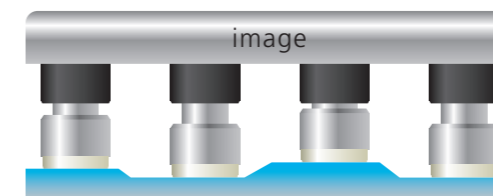
△ locked



△ unlocked

### Brake Light

The locked or unlocked status can be checked at a glance.



### Auto Adjust Brake System

4-points breaking system with built-in pressure sensors to maintain table flat.



### Other Features

The Brake Release Knob (a)  
Secondary Switch (b)  
Emergency Stop Switch (c)

# Surgical Positions with 7300B and 7300BX

## Half Sitting Position



## Parkbench Position

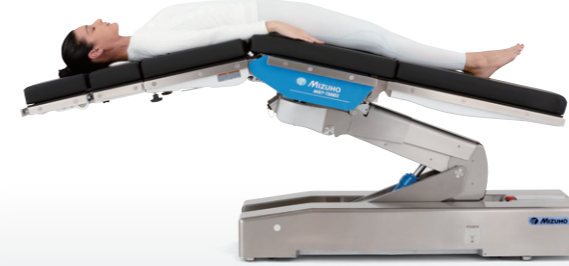


## Concord Position



## General Surgery

- General Surgery
- Ophthalmic Surgery
- ENT Surgery
- Kidney Surgery
- VATS Surgery
- Endoscopic Surgery
- Orthopedic Surgery
- Shoulder Surgery
- Arm Surgery
- Cardiac Surgery



## Spine Surgery

Spine Surgery / Cervical to Lumbar

- Laminectomy
- Discectomy or Microdiscectomy
- Decompression
- Vertebroplasty and Kyhoplasty
- Fusion
- Posterior-cervical
- Correction of spinal deformities



\* ProneView® is sold by Mizuho OSI

## Optional accessories

\*Image for illustration purpose only.  
 \*Some products are made to order.  
 \*The weight capacity may vary depending on the combination of accessories and operating table.



**A: Standard Armboard** \*Integrated Clamp  
 08-065-05 (For JP Side Rail)  
 08-117-06 (For US Side Rail)  
 08-117-16 (For EU Side Rail)  
 + 08-065-40 (60mm Pad for JP Side Rail)  
 + 08-117-07 (60mm Pad for US, EU Side Rail)



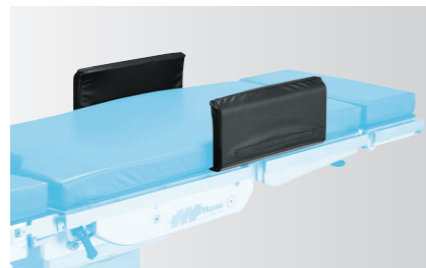
**B: Raised Armboard**  
 08-066-10-UE  
 08-110-01 (Clamp for JP Side Rail)  
 + 08-117-09 (Clamp for US Side Rail)  
 08-117-11 (Clamp for EU Side Rail)



**C: Lower Armboard** \*Pad and Clamp included  
 08-086-15 (For JP Side Rail)  
 08-086-15-R1 (For US Side Rail)  
 08-086-15-R2 (For EU Side Rail)



**D: Knee Rest (pair)** \*Pads included  
 08-072-01  
 08-110-01 (Clamp for JP Side Rail)  
 + 08-117-09 (Clamp for US Side Rail)  
 08-117-11 (Clamp for EU Side Rail)  
 \*Requires two clamps



**E: Arm Shield (pair)** \*Pads included  
 08-086-27 (130mm)  
 08-086-28 (160mm)  
 08-086-29 (190mm)



**F: Anesthesia Screen L Type**  
 \*Clamp included  
 08-062-00 (For JP Side Rail)  
 08-062-00-R1 (For US Side Rail)  
 08-062-00-R2 (For EU Side Rail)



**G: Chest & Waist Support (each)**  
 08-069-15-UE  
 08-111-11 (Clamp for JP Side Rail)  
 + 08-117-10 (Clamp for US Side Rail)  
 08-117-13 (Clamp for EU Side Rail)



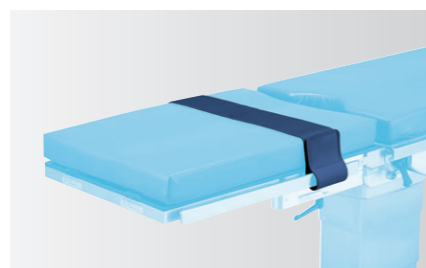
**H: Lateral Support (each)**  
 08-069-24-NC  
 08-111-11 (Clamp for JP Side Rail)  
 + 08-117-10 (Clamp for US Side Rail)  
 08-117-13 (Clamp for EU Side Rail)



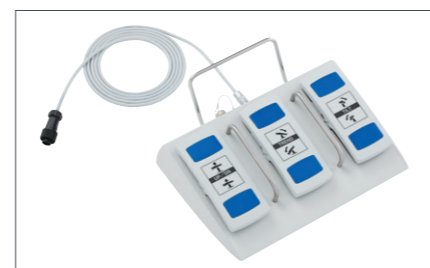
**I: Adjustable Body Support**  
 08-080-11-NC  
 08-110-01 (Clamp for JP Side Rail)  
 + 08-117-09 (Clamp for US Side Rail)  
 08-117-11 (Clamp for EU Side Rail)



**J: Horseshoe Head Rest**  
 07-952-00 (Table Attachment)  
 + 08-073-03 (U-Shaped Head Rest, L)  
 + 08-073-04 (U-Shaped Head Rest, S)



**K: Body Strap(1700mm)**  
 08-084-02



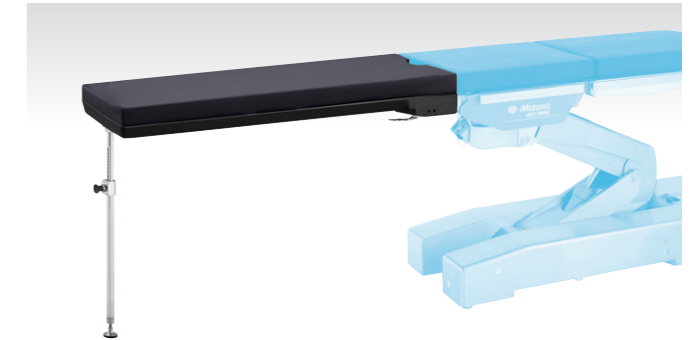
**L: Foot Switch**  
 18-443-43

## Optional accessories

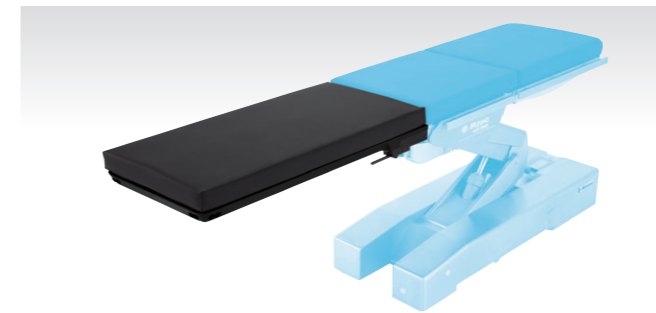
\*Image for illustration purpose only.  
 \*Some products are made to order.  
 \*The weight capacity may vary depending on the combination of accessories and operating table.



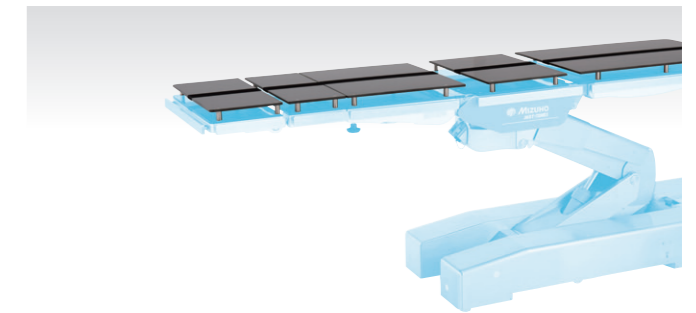
**M: Head Extension II**  
 08-075-90 (For JP Side Rail)  
 08-075-90-R1 (For US Side Rail)  
 08-075-90-R2 (For EU Side Rail)



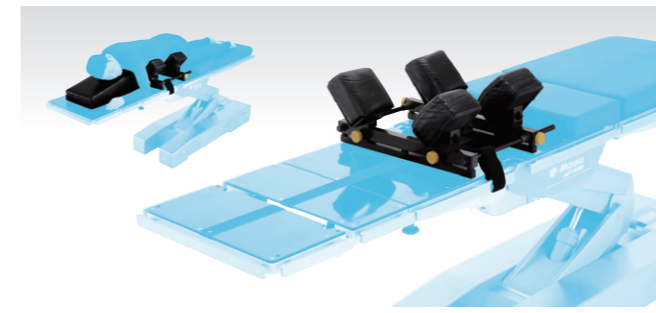
**N: 122cm Carbon Fiber Extension II**  
 08-070-55  
 + 08-083-67 (70mm Pad)



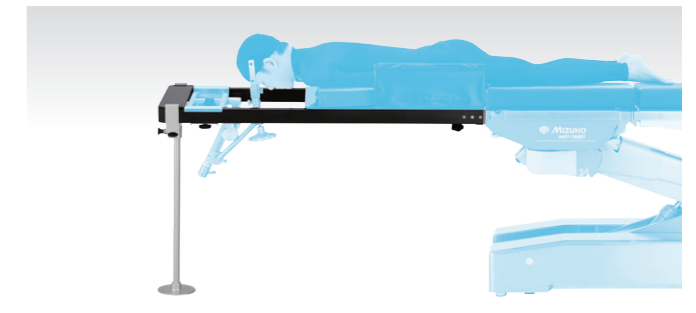
**O: 100cm Carbon Fiber Extension II**  
 08-070-54  
 + 08-083-65 (70mm Pad)



**P: Radiographic Table Tops**  
 08-089-76  
 08-089-86 (Digital Radiographic Table Tops)



**Q: Radiolucent Carbon Fiber Four Point Spinal Frame**  
 02-121-10



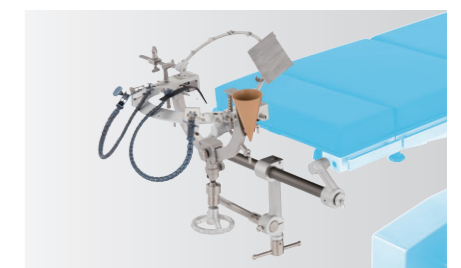
**R: Cervical Spine Frame**  
 08-007-22 (For JP Side Rail)  
 08-007-22-R1 (For US Side Rail)  
 08-007-22-R2 (For EU Side Rail)



**S: Armboard for Prone Position (each)**  
 08-066-05-NC  
 08-110-01 (Clamp for JP Side Rail)  
 + 08-117-09 (Clamp for US Side Rail)  
 08-117-11 (Clamp for EU Side Rail)



**T: Sitting Position Frame**  
 \*Clamps for JP Side Rail included  
 07-953-01  
 + 08-117-09 (Clamp for US Side Rail)  
 + 08-117-11 (Clamp for EU Side Rail)  
 \*Requires two clamps  
 \*Only to be attached to Mizuho Head Holder and Table.



**U: Smart Fix Head Frame Holder Set**

# Specification

Product Name	MST-7300BX		
Product Code	18-351-20	18-351-30	18-351-70
Product Description	MST-7300BX(ASIA)	MST-7300BX(EU)	MST-7300BX(US)
GTIN code	04946329277043	04946329277067	04946329277050
Country of Origin	Japan		
Drive System	Electro Hydraulic		
Table Top Dimensions	2100 mm (L) x 500 mm (W)		
Base Dimensions	1335 mm (L) x 500 mm (W)		
Table Weight	365 kg		
Supply Voltage	AC 100-240 V 50-60 Hz		
Power Consumption	700 VA		
Battery Power	DC 24 V		
Elevation Range	450 mm - 1100 mm		
Tredelenburg	Head down 45 deg. / Head up 20 deg.		
Lateral Tilt	25 deg. Right / Left		
Back Section	90 deg. Up / 30 deg. Down		
X-Y Axis Slide	Available		
X Sliding	100 mm to Head / 100 mm to Leg		
Y Sliding	80 mm Right / Left		
Brake	Lock / Unlock		
Return to Level	Trendenburg / Lateral / Back / Leg / Y Sliding (Right / Left)		
Other Function	Display power supply, power consumption, positioning information on the hand controller and the touch panel on the table		
Operating Unit	Control Box / Touch Panel / Foot Switch(option) / Extra Switch / Emergency Stop Switch		
Leg Section	50 deg. Up / 45 deg. Down		
Head Section	60 deg. Up / 90 deg. Down		
Switchable Operating Speed (electrically)	HIGH / LOW		
Maximum Permissible load Elevation and Articulations	360 kg (800 lbs.)		
Standard Accessories	Mizuho Original Mattress Hand Controller		
Power Cord Options	To be selected according to country type		

MST-7300B		
18-350-20	18-350-30	18-350-70
MST-7300B(ASIA)	MST-7300B(EU)	MST-7300B(US)
04946329277081	04946329277104	04946329277098
Japan		
Electro Hydraulic		
2100 mm (L) x 500 mm (W)		
1335 mm (L) x 500 mm (W)		
340 kg		
AC 100-240 V 50-60 Hz		
700 VA		
DC 24 V		
400 mm - 1050 mm		
Head down 45 deg. / Head up 20 deg.		
25 deg. Right / Left		
90 deg. Up / 30 deg. Down		
Not Available		
-		
Lock / Unlock		
Trendenburg / Lateral / Back / Leg		
Display power supply, power consumption, positioning information on the hand controller and the touch panel on the table		
Control Box / Touch Panel / Foot Switch(option) / Extra Switch / Emergency Stop Switch		
50 deg. Up / 45 deg. Down		
60 deg. Up / 90 deg. Down		
HIGH / LOW		
360 kg (800 lbs.)		
Mizuho Original Mattress Hand Controller		
To be selected according to country type		

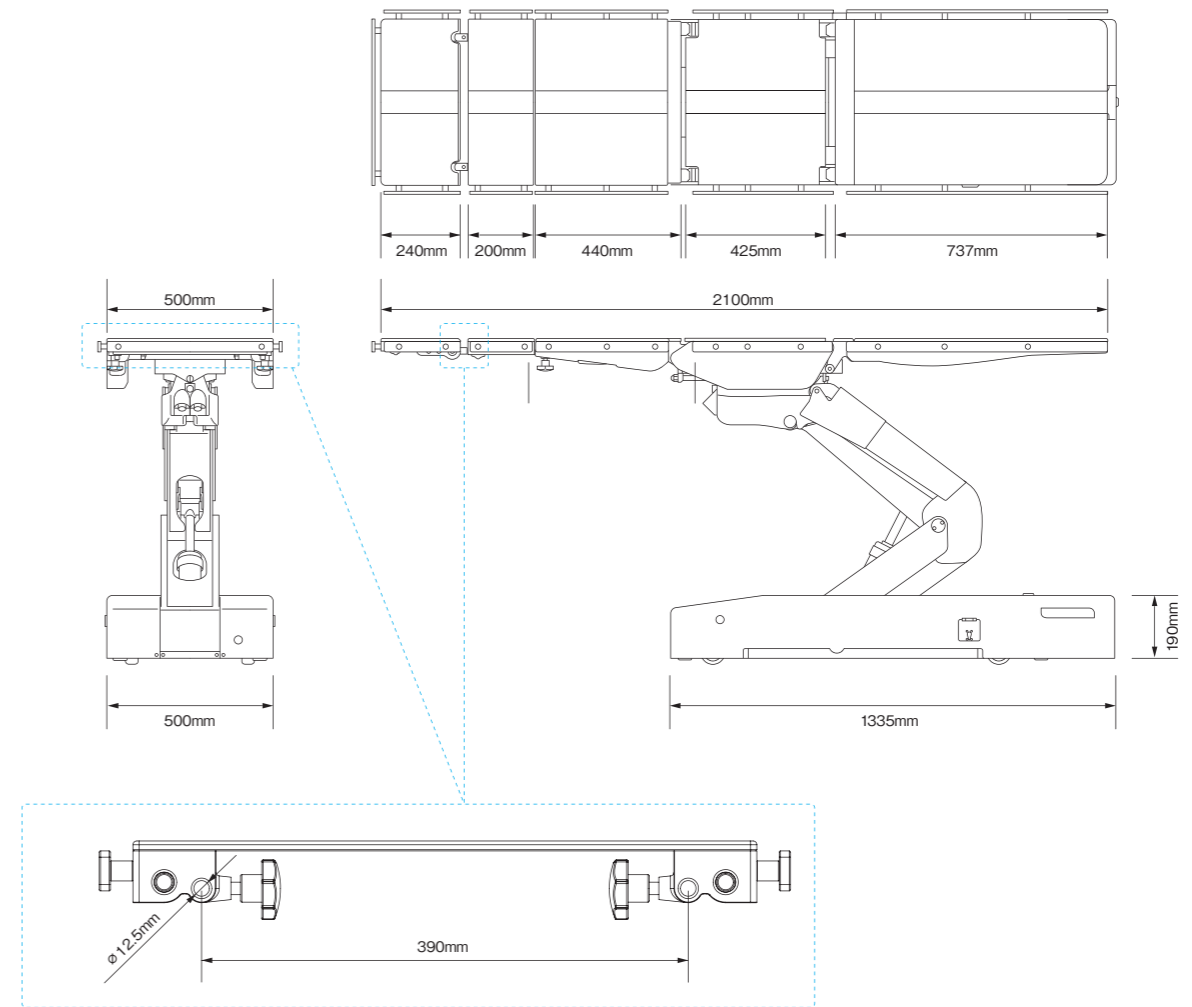
## Main Material(MST-7300B and MST-7300BX)

Table Plate	Phenolic Resin
Side Rail	Stainless Steel
Side Frame	Aluminum Alloy
Elevation Column (Cover)	Stainless Steel
Base	Stainless Steel

## Operating Environment(MST-7300B and MST-7300BX)

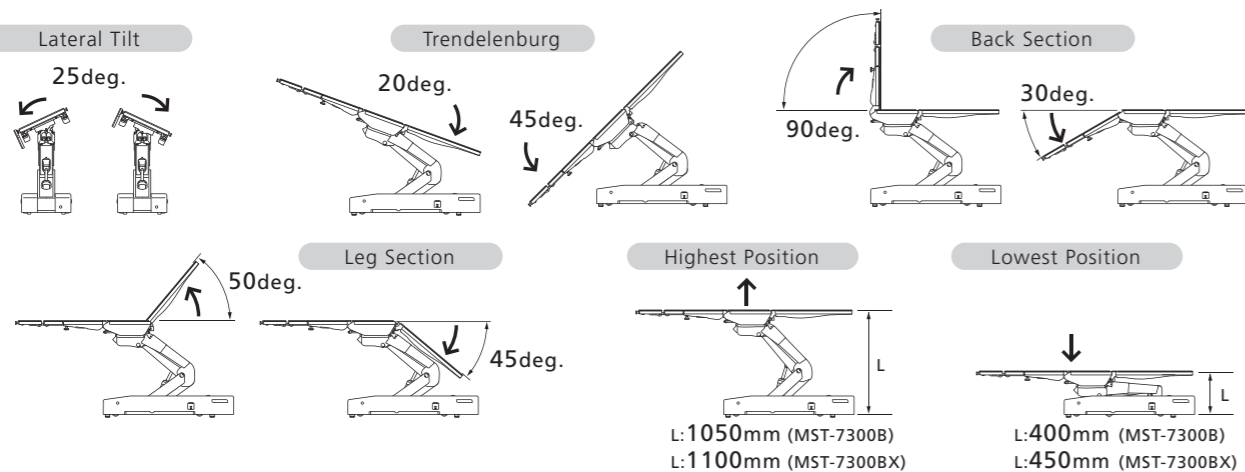
Ambient Temperature	10 to 40 °C
Relative Humidity	30 to 75 %
Atmospheric Pressure	700 to 1060 hPa

## Outer Dimension Drawing



\*Enlarged drawing of placing a table attachment

## MST-7300B and MST-7300BX



## MST-7300BX

