

MOT-VS600Series



MOT-VS600Series


MIZUHO Corporation
3-30-13 Hongo, Bunkyo-ku, Tokyo 113-0033, JAPAN
Phone +81-3-6627-1506
F a x +81-3-3815-1280
U R L <https://www.mizuho.co.jp/en>



Website




Contact Us

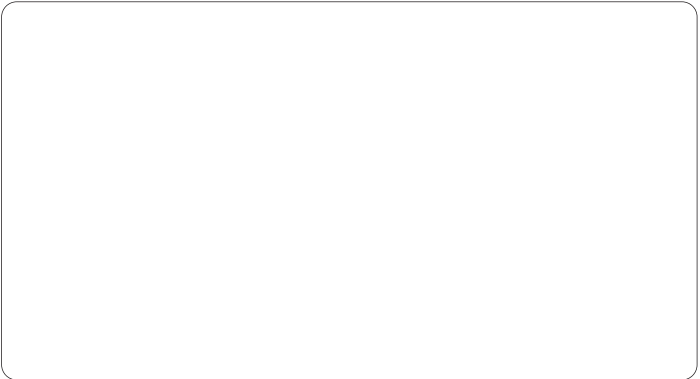


EMERGO EUROPE
Westervoortsedijk 60,
6827 AT Arnhem
The Netherlands




Caution

- Prior to product use, carefully read and comprehend the contents of the user manual and product packaging information.
- Inspect the product routinely and thoroughly, in addition to pre- and postoperative examinations.
- For after-sale support, contact your local dealer /distributor.



* Under our policy, ongoing improvements and published specifications may be subject to change without prior notice.
* All published CG photos and illustrations have been from images.
©MIZUHO 2025

MOT-VS600

MIZUHO Operating Table Versatile Slide 600 Series

MOT-VS600 offers easy and smooth pre-operative positioning and intra-operative position movements that fulfill the needs of general surgery, robotic surgery, bariatric surgery and other surgeries.

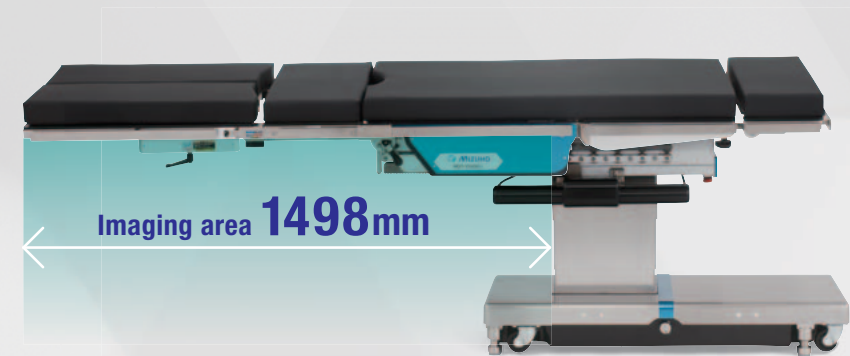
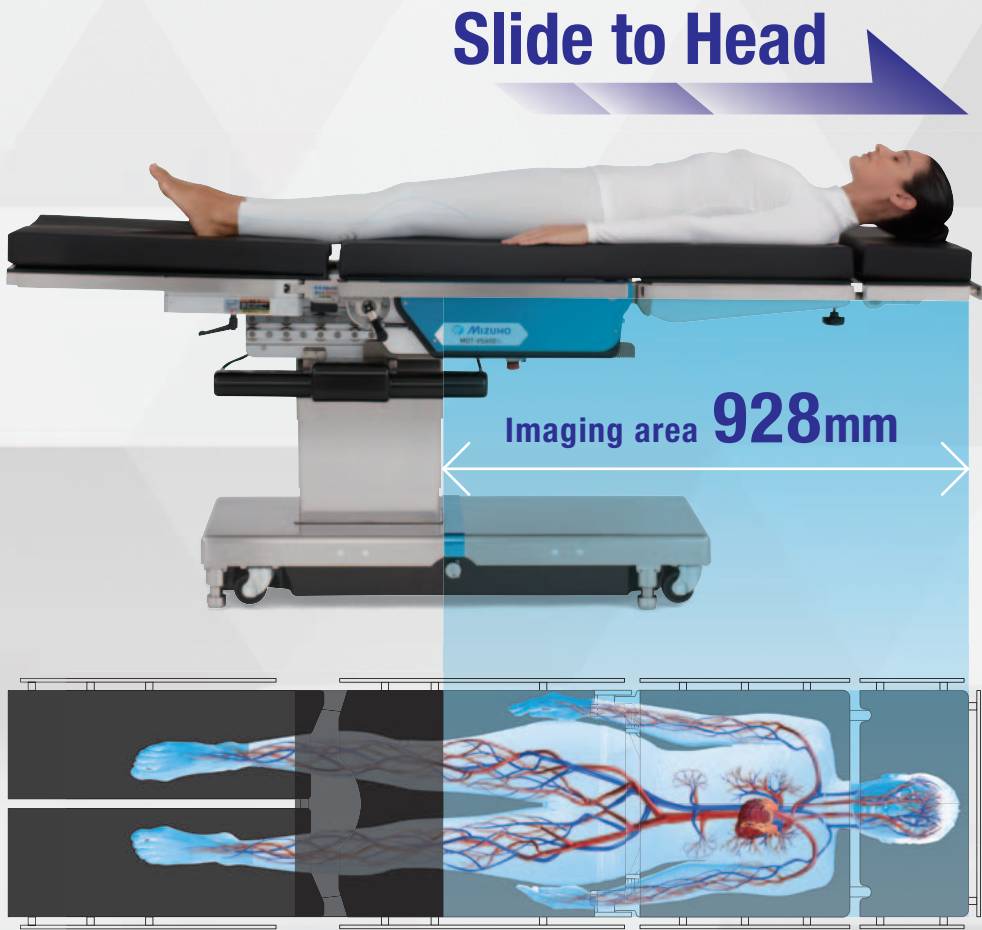
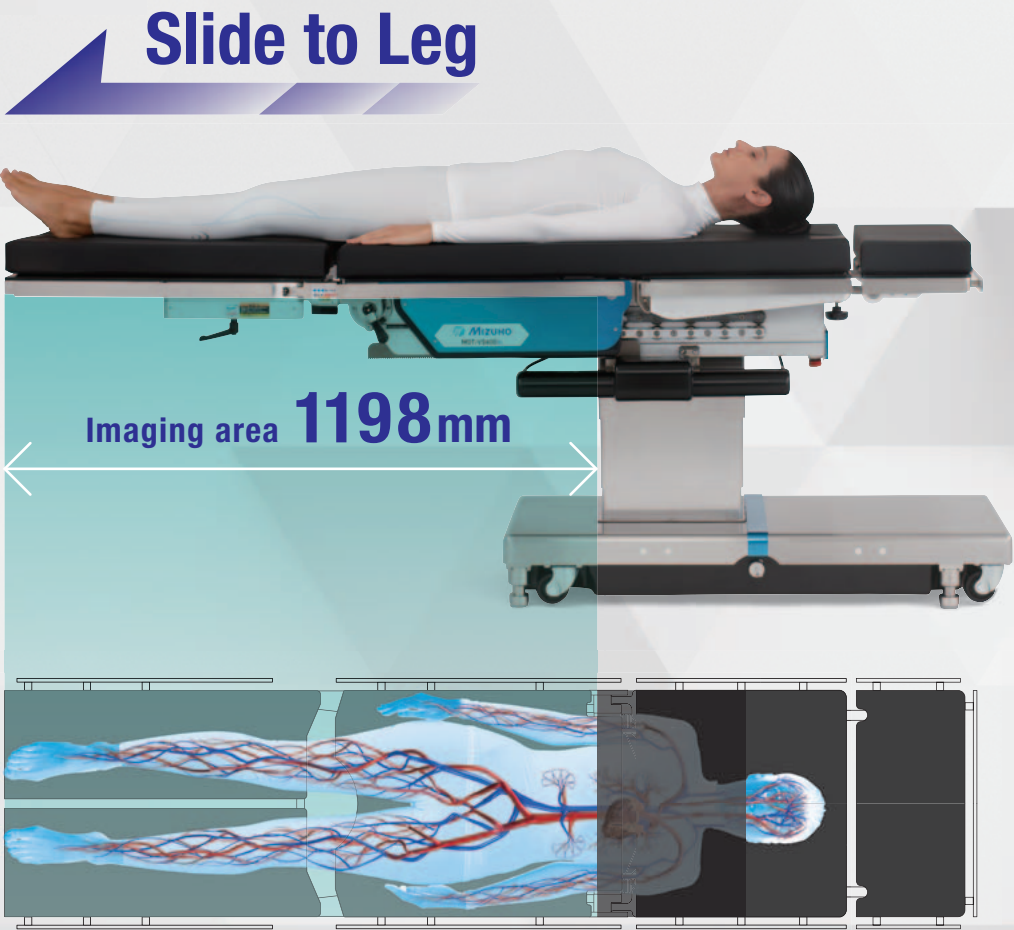


665mm Table Top Slide

665mm Table Top Slide Stroke

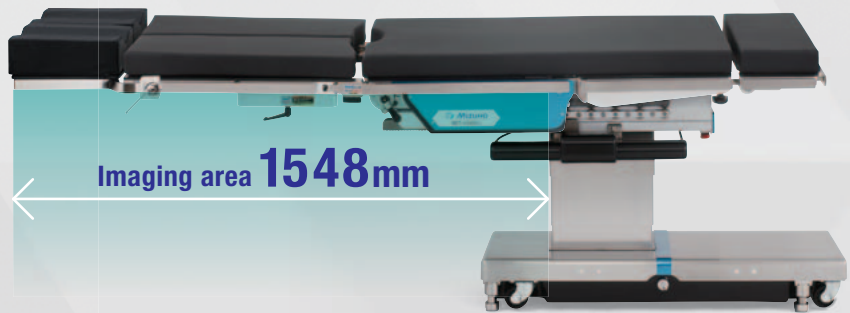
Exceptional slide enhances C-Arm and surgical access

MOT-VS600



With Seat Extension

It improves imaging of the kidney area by attaching the seat extension to the leg side and sliding the table top to the maximum.

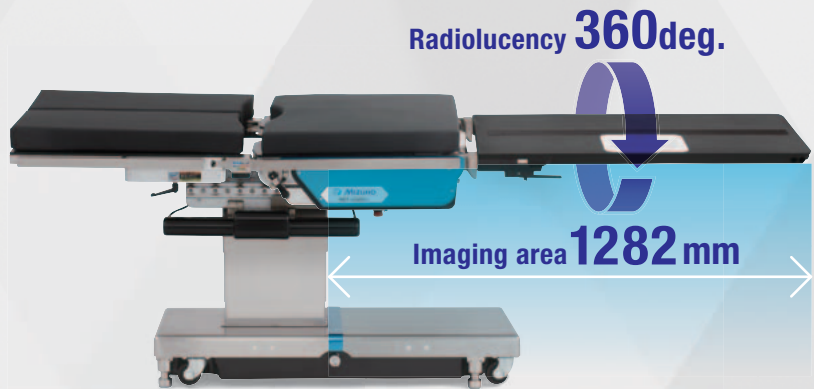


With Knee Rest

Attaching the knee rest as leg extension provides additional imaging access.

With Carbon Extension

The carbon fiber extension offers 360-degree imaging for cardiovascular, spinal and other procedures requiring C-Arm / 3D C-Arm.



With Head Extension

This 240 mm Head extension offers exceptional C-Arm imaging access for procedures requiring upper body imaging such as neurosurgery, ENT, Ophthalmology and etc.



Best-in-class Low Minimum Height

- Provides excellent accessibility to patients for surgeons who sit while performing surgeries.
- An ideal ergonomic platform for laparoscopic surgeries.
- A low stable platform for performing microsurgeries.
- Ensures optimal heights for performing spinal surgeries.



*The minimum height of MOT-VS600DH and MOT-VS600DHK is 580mm. See p.17 for the details.

Slim Design

The smaller sized column and the compact table design allow the surgeon to get closer to the patient with less physical strains.



Heavy Duty

With its maximum load capacity of 360 kg in all of its operations, the MOT-VS600 offers the highest level of safety and stability.

Lift: **450kg**
Articulation: **360kg**

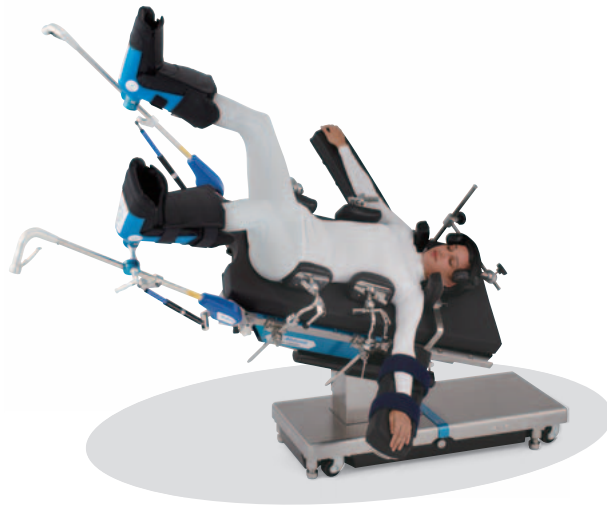


* Wilson Plus™ Radiolucent Frame and ProneView® are sold by Mizuho OSI



Patient Positions

◦ Recommended Accessories



Laparoscopic Surgery

- Anesthesia Screen
- Standard Armboard with Pad
- Levitator Stirrups II
- Head Supporter
- Adjustable Body Support
- Shoulder Support



Robotic Surgery

- Anesthesia Screen
- Standard Armboard with Pad
- Levitator Stirrups II
- Shoulder Support
- Body Strap



Bariatric Surgery / Supine Position

- Anesthesia Screen
- Standard Armboard with Pad
- Table Side Extension
- Pad for Table Side Extension
- Body Strap



Urology

- Anesthesia Screen
- Standard Armboard with Pad
- Uro Drain Tray Set
- Levitator Stirrups II



Kidney Surgery

- Anesthesia Screen
- Standard Armboard with Pad
- Raised Armboard
- Lateral Support



OB-GYN

- Anesthesia Screen
- Standard Armboard with Pad
- Levitator Stirrups II

MOT-VS600

Patient Positions

• Recommended Accessories



Cardiovascular Surgery

- Anesthesia Screen
- Locking Type Armboard
- Pad for Armboard
- Carbon Fiber Extension
- Pad for Carbon Fiber Extension
- Side Rail Adaptor, Long for Carbon Fiber Board
- Side Rail Adaptor, Short for Carbon Fiber Board



Traumatology / Hand Surgery

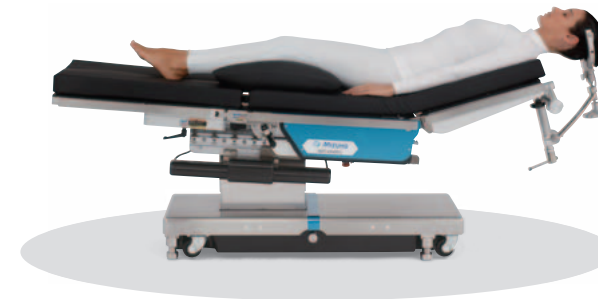
- Anesthesia Screen
- Standard Armboard with Pad
- Imaging Armboard
- Pad for Imaging Armboard



Pediatric Surgery

- Anesthesia Screen
- Back Section Board Attachment for Pediatric
- Pad for Back Section Board Attachment for Pediatric

MOT-VS600



Neurosurgery / Half Sitting Position

- Anesthesia Screen
- Standard Armboard with Pad
- Smart Fix Head Frame Holder Set
- Body Strap



Neurosurgery / Parkbench Position

- Anesthesia Screen
- Lower Armboard
- Raised Armboard
- Lateral Support
- Smart Fix Head Frame Holder Set
- Body Strap



Neurosurgery / Prone

- Anesthesia Screen
- Arm shield with Pad (160 mm)
- Smart Fix Head Frame Holder Set
- Body Strap

Patient Positions

◦ Recommended Accessories



Orthopedic Surgery / Femur Fracture-Supine

- Anesthesia Screen
- Standard Armboard with Pad
- Raised Armboard
- Traction Device Arm
- Extension Arm, Right/Left
- Traction Device Right/Left
- Traction Shoe Right/Left
- Wide Pelvic Support Board
- Support Rods
- Lower Limb Support
- Inner Thigh Column with Pad



Spine Surgery

- Anesthesia Screen
- Wilson Plus™ Radiolucent Frame
- ProneView®
- Armboard for Prone Position
- Carbon Fiber Extension

* Wilson Plus™ Radiolucent Frame and ProneView® are sold by Mizuho OSI



Orthopedic Surgery / Femur Fracture-Lateral

- Anesthesia Screen
- Standard Armboard with Pad
- Raised Armboard
- Traction Device Arm
- Extension Arm, Right/Left
- Traction Device Right/Left
- Traction Shoe Right/Left
- Pelvic Support Board
- Support Rods
- Lower Limb Support
- Inner Thigh Support with Pad for Traction in Lateral Posture



Spine Surgery

- Cervical Spine Frame
- Smart Fix Head Frame Holder Set
- Arm Shield with Pad (160 mm)



Orthopedic Surgery / Tibia Fracture

- Anesthesia Screen
- Standard Armboard with Pad
- Raised Armboard
- Traction Device Arm
- Extension Arm, Right/Left
- Traction Device Right/Left
- Traction Shoe Right/Left
- Pelvic Support Board
- Support Rods
- Lower Limb Support
- L-shaped Knee Rest with Pad

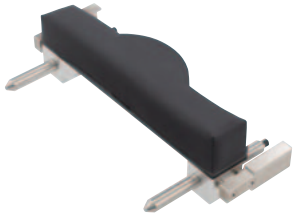
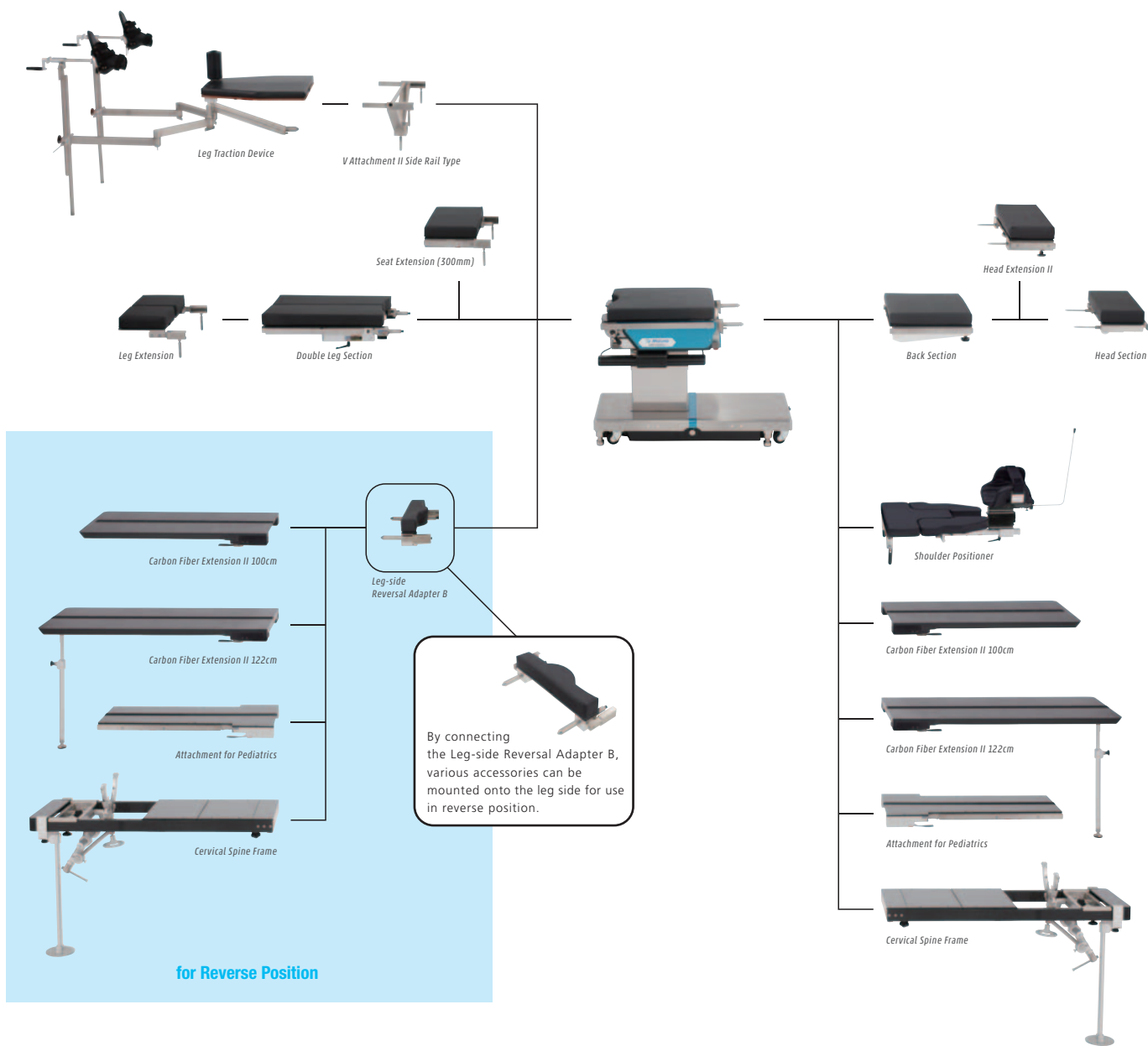


Traumatology / Shoulder Surgery

- Lower Armboard
- Shoulder Positioner
- Pad for Shoulder Positioner
- Lateral Support

Expanded Functions

MOT-VS600 series can be used across multiple disciplines from general to orthopedic surgeries, neurosurgeries, etc.
Various accessories mounted onto the back section and seat section support a wide range of surgical techniques and body positions.



| | | |
|--|--|--------------|
| Leg-side Reversal Adapter B | | |
| Required to attach accessories to the leg side | | |
| 08-077-60 | Leg-side Reversal Adapter B | JP Side Rail |
| 08-077-60-R1 | Leg-side Reversal Adapter B (R1) | US Side Rail |
| 08-077-60-R2 | Leg-side Reversal Adapter B (R2) | EU Side Rail |
| *Pad not included | | |
| Pad / Radiographic Table Top for Leg-side Reversal Adapter | | |
| 18-042-90 | Mizuho Original Pad for Leg-side Reversal Adapter | |
| 18-097-00 | Digital Radiographic Table Top for Leg-side Reversal Adapter | |

Reverse Patient Positions

◉ Recommended Accessories



Cardiovascular Surgery

- ◉ Anesthesia Screen
- ◉ Locking Type Armboard
- ◉ Pad for Armboard
- ◉ Carbon Fiber Extension
- ◉ Pad for Carbon Fiber Extension
- ◉ Side Rail Adaptor, Long for Carbon Fiber Board
- ◉ Side Rail Adaptor, Short for Carbon Fiber Board



Spine Surgery

- ◉ Anesthesia Screen
- ◉ Wilson Plus™ Radiolucent Frame
- ◉ ProneView®
- ◉ Armboard for Prone Position
- ◉ Carbon Fiber Extension

* Wilson Plus™ Radiolucent Frame and ProneView® are sold by Mizuho OSI



Pediatric Surgery

- ◉ Anesthesia Screen
- ◉ Back Section Board Attachment for Pediatric
- ◉ Pad for Back Section Board Attachment for Pediatric

Other Features

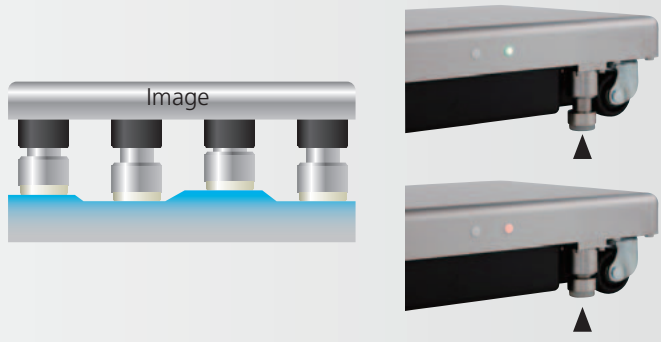
4 Way Leg Section

Provides wide working areas and optimal access to the patient via the double-jointed configurations.



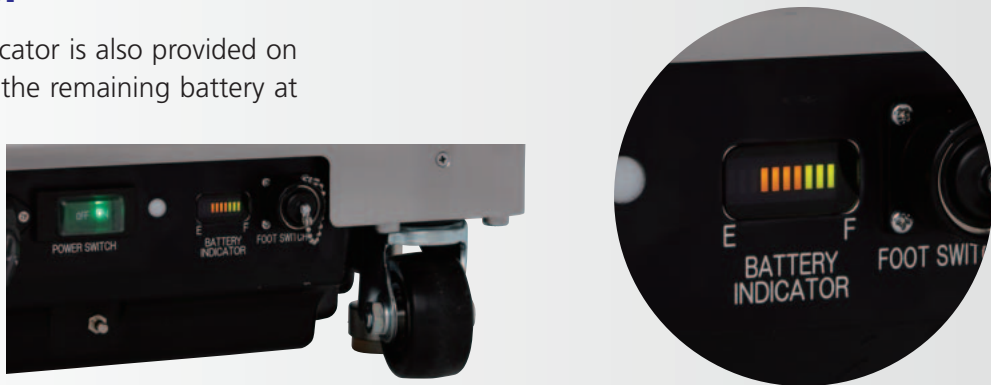
Auto-Adjust Brake System / Brake Lamps

The 4-point braking system with built-in pressure sensors automatically adjusts the height in accordance with the unevenness of the floor. The brake lamps show you at a glance that the brakes are locked or unlocked.



Battery Indicator

Easy-to-read battery indicator is also provided on the column for checking the remaining battery at a glance.



Radiographic Table Top

Digital Radiographic Table Tops Fixed Type
*Digital Film compatible



Radiographic Table Tops Fixed Type



MOT-VS600

AUX Switch

The Aux Switch is located directly underneath the table top to permit swift responses if the hand controller malfunctions.



Hand Controller

The wired hand controller is included as a standard accessory, which consists of easy-to-distinguish icons. The built-in backlight provides direct visualization during an endoscopic procedure. *IR remote controller is optional.

Wired



Wireless



Foot Switch Type A (18-443-50)*Option

Pedal function | Left: Elevation
Middle: Trendelenburg
Right: Lateral Tilt



Specifications

MOT-VS600D (Low height version)

| | | | |
|----------------------|--|--------------|-----------|
| Product Code | VS600Dj | JP Side Rail | 18-600-20 |
| | VS600De | EU Side Rail | 18-600-30 |
| | VS600Da | US Side Rail | 18-600-70 |
| Trade Name | Operating Table MOT-VS600 | | |
| Drive system | Electro Hydraulic System | | |
| Country of origin | Japan | | |
| Table Top Dimensions | 500 mm x 2124 mm | | |
| Base Dimensions | 483 mm x 1133 mm | | |
| Table Weights | 390 kg | | |
| Supply Voltage | AC 100-240 V 50-60 Hz | | |
| Power Consumption | 450 VA | | |
| Battery Power | DC 24 V | | |
| Operating Voltage | DC 24 V | | |
| Standard Accessories | Table Pads / Hand Controller | | |
| Power Cord Options | To be selected according to country type | | |

MOT-VS600DH (High height version)

| | | | |
|----------------------|--|--------------|-----------|
| Product Code | VS600DHj | JP Side Rail | 18-610-20 |
| | VS600DHe | EU Side Rail | 18-610-30 |
| | VS600DHa | US Side Rail | 18-610-70 |
| Trade Name | Operating Table MOT-VS600 | | |
| Drive system | Electro Hydraulic System | | |
| Country of origin | Japan | | |
| Table Top Dimensions | 500 mm x 2124 mm | | |
| Base Dimensions | 483 mm x 1133 mm | | |
| Table Weights | 400 kg | | |
| Supply Voltage | AC 100-240 V 50-60 Hz | | |
| Power Consumption | 450 VA | | |
| Battery Power | DC 24 V | | |
| Operating Voltage | DC 24 V | | |
| Standard Accessories | Table Pads / Hand Controller | | |
| Power Cord Options | To be selected according to country type | | |

MOT-VS600DK (Kidney Bridge / Low height version)

| | | | |
|----------------------|--|--------------|-----------|
| Product Code | VS600DKj | JP Side Rail | 18-620-20 |
| | VS600DKe | EU Side Rail | 18-620-30 |
| | VS600DKa | US Side Rail | 18-620-70 |
| Trade Name | Operating Table MOT-VS600 | | |
| Drive system | Electro Hydraulic System | | |
| Country of origin | Japan | | |
| Table Top Dimensions | 500 mm x 2124 mm | | |
| Base Dimensions | 483 mm x 1133 mm | | |
| Table Weights | 400 kg | | |
| Supply Voltage | AC 100-240 V 50-60 Hz | | |
| Power Consumption | 450 VA | | |
| Battery Power | DC 24 V | | |
| Operating Voltage | DC 24 V | | |
| Standard Accessories | Table Pads / Hand Controller | | |
| Power Cord Options | To be selected according to country type | | |

MOT-VS600DHK (Kidney Bridge / High height version)

| | | | |
|----------------------|--|--------------|-----------|
| Product Code | VS600DHKj | JP Side Rail | 18-630-20 |
| | VS600DHKe | EU Side Rail | 18-630-30 |
| | VS600DHKa | US Side Rail | 18-630-70 |
| Trade Name | Operating Table MOT-VS600 | | |
| Drive system | Electro Hydraulic System | | |
| Country of origin | Japan | | |
| Table Top Dimensions | 500 mm x 2124 mm | | |
| Base Dimensions | 483 mm x 1133 mm | | |
| Table Weights | 410 kg | | |
| Supply Voltage | AC 100-240 V 50-60 Hz | | |
| Power Consumption | 450 VA | | |
| Battery Power | DC 24 V | | |
| Operating Voltage | DC 24 V | | |
| Standard Accessories | Table Pads / Hand Controller | | |
| Power Cord Options | To be selected according to country type | | |

| | |
|---------------------------------------|---|
| Elevation Range | 520 mm - 1000 mm |
| Trendelenburg | Head Up 30 deg. / Head Down 40 deg. |
| Lateral Tilt | 35 deg. Left / Right |
| Back Section | 90 deg. Up / 40 deg. Down |
| Table Top Slide | 665 mm (250 mm to Head, 415 mm to Leg) |
| Head Section | 60 deg. Up / 90 deg. Down |
| Leg Section | 90 deg. Down |
| Leg Section Opening Angle | First joint 50 deg. Second joint 40 deg. (Two stage spread system) |
| Return to Level | Trendelenburg / Lateral Tilt / Back Section / Flexing |
| Maximum Permissible Load Elevation | 450 kg (1000 lbs.) in Normal |
| Maximum Permissible Load Articulation | 135 kg (300 lbs.) in Reverse |

| | |
|---------------------------------------|---|
| Elevation Range | 580 mm - 1060 mm |
| Trendelenburg | Head Up 30 deg. / Head Down 40 deg. |
| Lateral Tilt | 35 deg. Left / Right |
| Back Section | 90 deg. Up / 40 deg. Down |
| Table Top Slide | 665 mm (250 mm to Head, 415 mm to Leg) |
| Head Section | 60 deg. Up / 90 deg. Down |
| Leg Section | 90 deg. Down |
| Leg Section Opening Angle | First joint 50 deg. Second joint 40 deg. (Two stage spread system) |
| Return to Level | Trendelenburg / Lateral Tilt / Back Section / Flexing |
| Maximum Permissible Load Elevation | 450 kg (1000 lbs.) in Normal |
| Maximum Permissible Load Articulation | 135 kg (300 lbs.) in Reverse |

| | |
|---------------------------------------|---|
| Elevation Range | 520 mm - 1000 mm |
| Trendelenburg | Head Up 30 deg. / Head Down 40 deg. |
| Lateral Tilt | 35 deg. Left / Right |
| Back Section | 90 deg. Up / 40 deg. Down |
| Table Top Slide | 665 mm (250 mm to Head, 415 mm to Leg) |
| Head Section | 60 deg. Up / 90 deg. Down |
| Leg Section | 90 deg. Down |
| Leg Section Opening Angle | First joint 50 deg. Second joint 40 deg. (Two stage spread system) |
| Return to Level | Trendelenburg / Lateral Tilt / Back Section / Flexing / Kidney Bridge |
| Maximum Permissible Load Elevation | 450 kg (1000 lbs.) in Normal |
| Maximum Permissible Load Articulation | 135 kg (300 lbs.) in Reverse |
| Kidney Bridge | 150 mm |

| | |
|---------------------------------------|---|
| Elevation Range | 580 mm - 1060 mm |
| Trendelenburg | Head Up 30 deg. / Head Down 40 deg. |
| Lateral Tilt | 35 deg. Left / Right |
| Back Section | 90 deg. Up / 40 deg. Down |
| Table Top Slide | 665 mm (250 mm to Head, 415 mm to Leg) |
| Head Section | 60 deg. Up / 90 deg. Down |
| Leg Section | 90 deg. Down |
| Leg Section Opening Angle | First joint 50 deg. Second joint 40 deg. (Two stage spread system) |
| Return to Level | Trendelenburg / Lateral Tilt / Back Section / Flexing / Kidney Bridge |
| Maximum Permissible Load Elevation | 450 kg (1000 lbs.) in Normal |
| Maximum Permissible Load Articulation | 135 kg (300 lbs.) in Reverse |
| Kidney Bridge | 150 mm |

Main Material

| | |
|--------------------------|-----------------|
| Table Plate | Phenolic Resin |
| Side Rail | Stainless Steel |
| Side Frame | Aluminum Alloy |
| Elevation Column (Cover) | Stainless Steel |
| Base (Cover) | Stainless Steel |

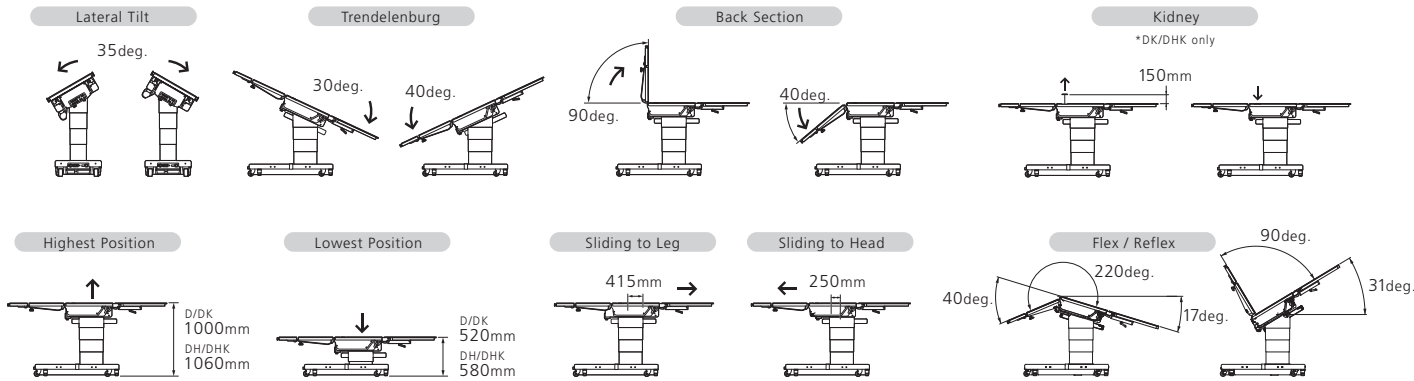
Operating Environment

| | |
|----------------------|-----------------|
| Ambient Temperature | 10 to 40 °C |
| Relative Humidity | 30 to 75 % |
| Atmospheric Pressure | 700 to 1060 hPa |

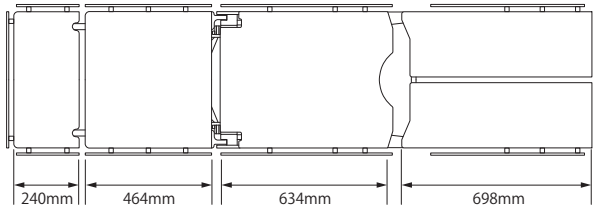


Mizuho Chiba Factory(JAPAN)

Table Function

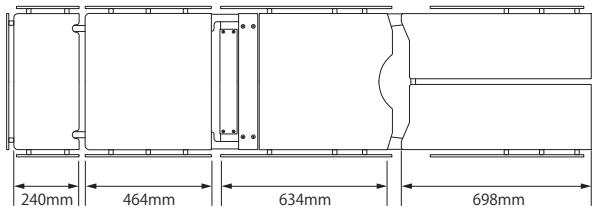


Outer Dimension Drawing



MOT-VS600D (Low Height version)

MOT-VS600DH (High Height version)



MOT-VS600DK (Kidney Bridge / Low Height version)

MOT-VS600DHK (Kidney Bridge / High Height version)

