




**MIZUHO Corporation**  
EMEA OR Equipment & Device Department  
3-30-13 Hongo, Bunkyo-ku, Tokyo 113-0033, JAPAN  
Phone +81-3-4334-9113  
F a x +81-3-3815-3185  
U R L <https://www.mizuho.co.jp>

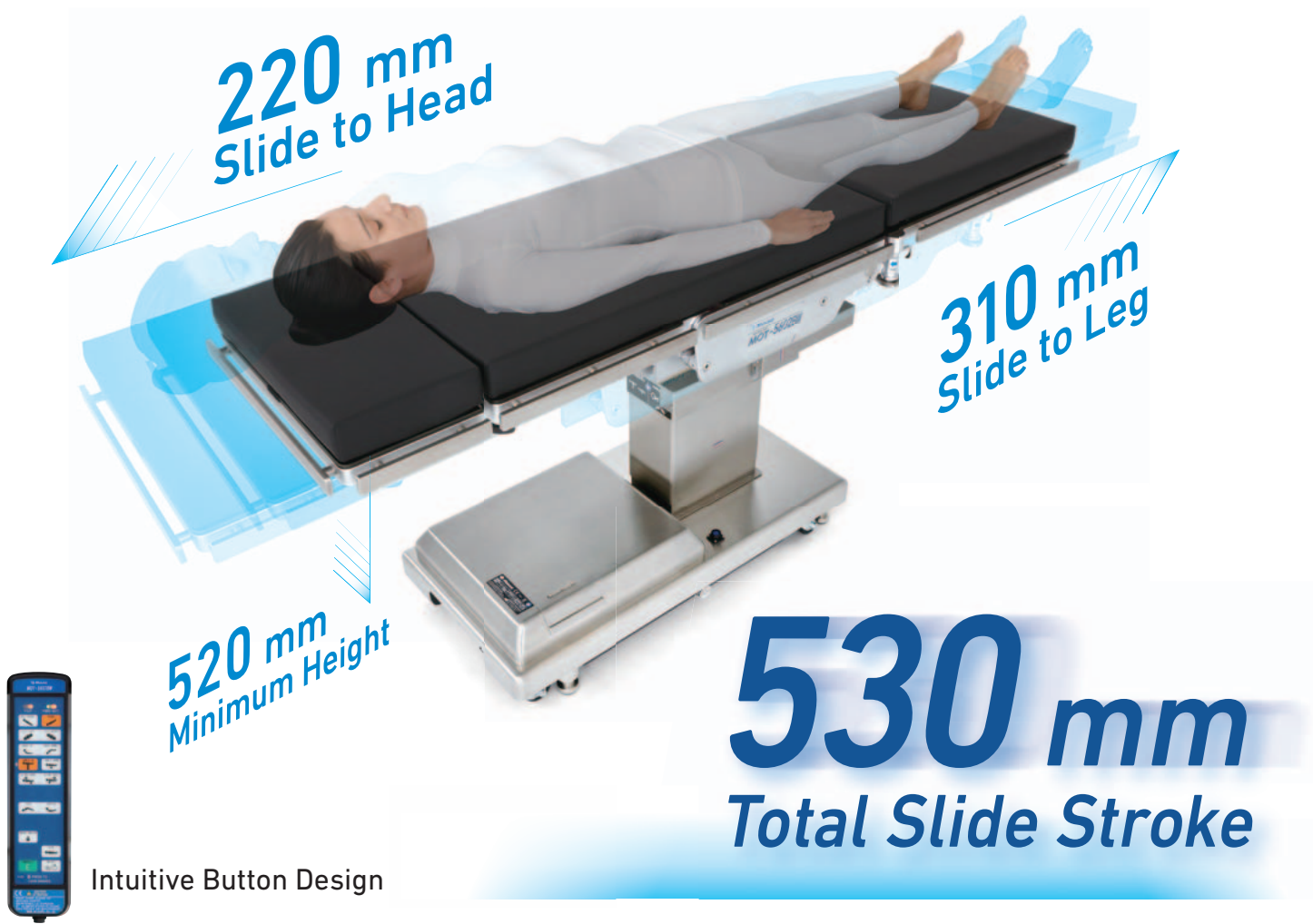
 **MIZUHO Corporation**  
3-30-13 Hongo, Bunkyo-ku, Tokyo 113-0033, JAPAN  
<https://www.mizuho.co.jp>

\* Under our policy, ongoing improvements and published specifications may be subject to change without prior notice.  
\* All published CG photos and illustrations have been from images.  
©MIZUHO 2024

<b>EC</b>	<b>REP</b>	<b>EMERGO EUROPE</b> Westervoortsedijk 60, 6827 AT Arnhem The Netherlands	<b>CE</b>
<div> Caution</div> <div><ul style="list-style-type: none"><li>•Prior to product use, carefully read and comprehend the contents of the user manual and product packaging information.</li><li>•Inspect the product routinely and thoroughly, in addition to pre- and postoperative examinations.</li><li>•For after-sale support, contact your local dealer /distributor.</li></ul></div>			
<div></div>			

# Multipurpose General Operating Table

MOT-5602BW is designed to accommodate a wide range of surgical procedures and various patient positions with the long slide stroke and low minimum table height. It can be used across multiple disciplines from general to orthopedic, neuro- and other surgeries. It is also ideal for intraoperative imaging procedures.



# Ideal Imaging Access

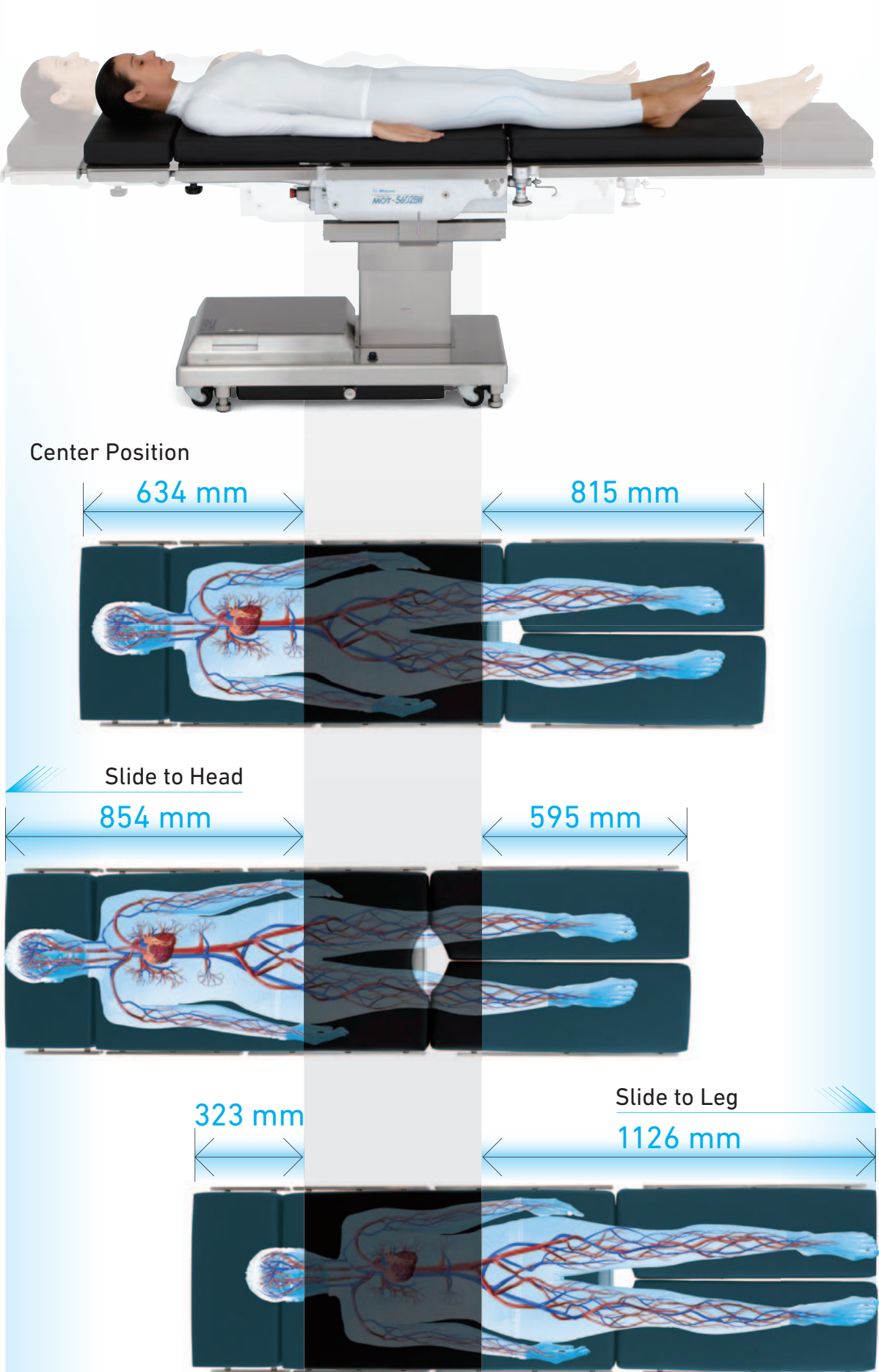
- The longitudinal sliding function provides an ideal space for C-arm access.
- The long slide stroke reduces operator's efforts and time to change or reverse the patient position.



# Large Imaging Area

Operating Table  
**MOT-5602BW**

The maximum slide stroke up to 530 mm enables a smooth intraoperative imaging of the whole body.





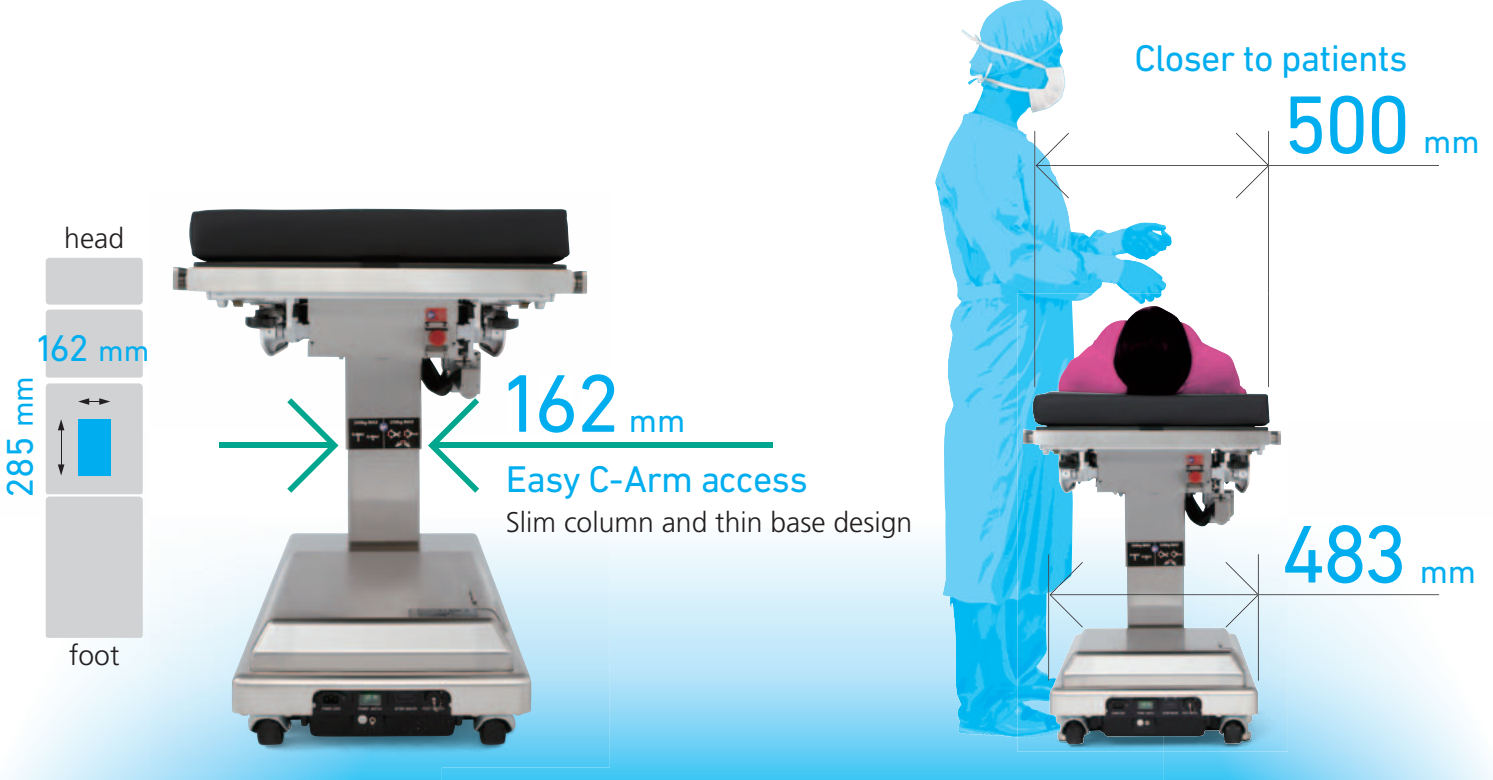
# Best-in-class Low Minimum Height

- Provides excellent accessibility to patients for surgeons who sit while performing surgeries.
- An ideal ergonomic platform for laparoscopic surgeries.
- A low stable platform for performing microsurgeries.
- Ensures optimal heights for performing spinal surgeries.



# Slim Design

The smaller sized column and the compact table design allow the surgeon to get closer to the patient with less physical strains.

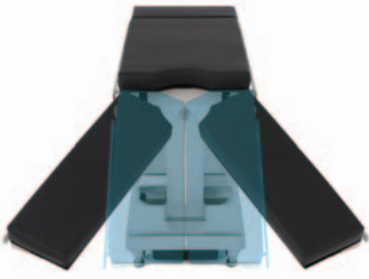


# Other Features

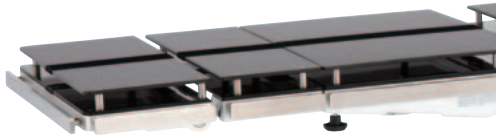


Lift : 270 kg  
Articulation : 250 kg

**Weight Capacity**  
The maximum weight capacity is 270 kg / 600 lbs.



**Detachable Split Leg Section**  
Easy access to the surgical site between the legs.



**Radiographic Table Top**  
Detachable radiographic table top.  
Optional accessory for conventional X-ray.

\* Wilson Plus™ Radiolucent Frame and ProneView® are sold by Mizuho OSI

## Kidney Surgery

- Anesthesia Screen
- Standard Armboard with Pad
- Raised Armboard
- Lateral Support
- Body Strap (1700 mm)



## Urology

- Uro Drain Set
- Anesthesia Screen
- Standard Armboard with Pad
- Levitator Stirrups II



## OB-GYN

- Anesthesia Screen
- Standard Armboard with Pad
- Levitator Stirrups II
- Seat Extension
- Pad for Seat Extension



## Neurosurgery / Parkbench Position

- Anesthesia Screen
- Smart Fix Head Frame Holder Set
- Raised Armboard
- Lower Armboard
- Lateral Support
- Body Strap



## Neurosurgery / Half Sitting Position

- Anesthesia Screen
- Smart Fix Head Frame Holder Set
- Body Strap
- Standard Armboard with Pad



## Laparoscopic Surgery

- Anesthesia Screen
- Standard Armboard with Pad
- Levitator Stirrups II
- Head Supporter
- Adjustable Body Support
- Shoulder Support



## Neurosurgery / Prone Position

- Anesthesia Screen
- Arm Shield with Pad (160 mm)
- Smart Fix Head Frame Holder Set
- Body Strap







Orthopedic Surgery / Femur Fracture-Supine

- ◉ Anesthesia Screen
- ◉ Standard Armboard with Pad
- ◉ Raised Armboard
- ◉ Traction Device Arm
- ◉ Extension Arm, Right / Left
- ◉ Traction Device Right / Left
- ◉ Traction Shoe Right / Left
- ◉ Wide Pelvic Support II
- ◉ Inner Thigh Column with Pad
- ◉ Support Rods



Orthopedic Surgery / Femur Fracture-Lateral

- ◉ Anesthesia Screen
- ◉ Standard Armboard with Pad
- ◉ Raised Armboard
- ◉ Traction Device Arm
- ◉ Extension Arm, Right / Left
- ◉ Traction Device Right / Left
- ◉ Traction Shoe Right / Left
- ◉ Pelvic Support Board
- ◉ Support Rods
- ◉ Lower Limb Support
- ◉ Inner Thigh Support with Pad for Traction in Lateral Posture



Orthopedic Surgery / Tibia Surgery

- ◉ Anesthesia Screen
- ◉ Standard Armboard with Pad
- ◉ Raised Armboard
- ◉ Traction Device Arm
- ◉ Extension Arm, Right / Left
- ◉ Traction device Right / Left
- ◉ Traction shoe Right / Left
- ◉ L-shaped Knee Rest with Pad
- ◉ Pelvic Support Board
- ◉ Support Rods
- ◉ Lower Limb Support

Traumatology / Hand Surgery

- ◉ Anesthesia Screen
- ◉ Standard Armboard with Pad
- ◉ Imaging Arm Board
- ◉ Pad for Imaging Arm Board



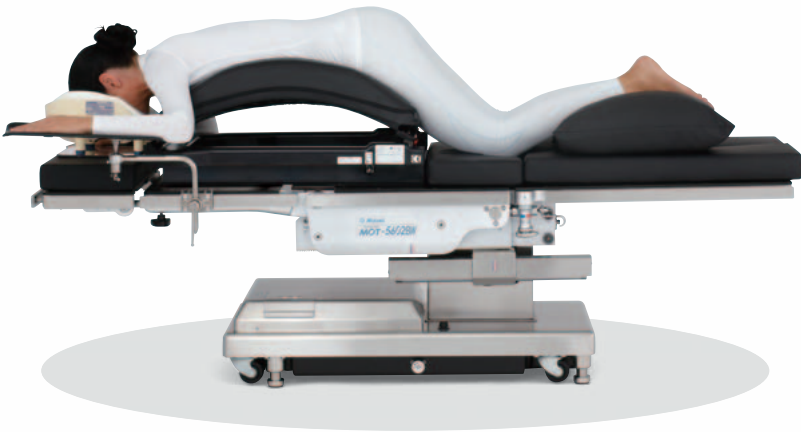
Traumatology / Shoulder Surgery

- ◉ Ultra Shoulder Positioner®
  - ◉ Lower Armboard
  - ◉ Lateral Support
- \* Ultra Shoulder Positioner® is sold by Mizuho OSI

Spine Surgery

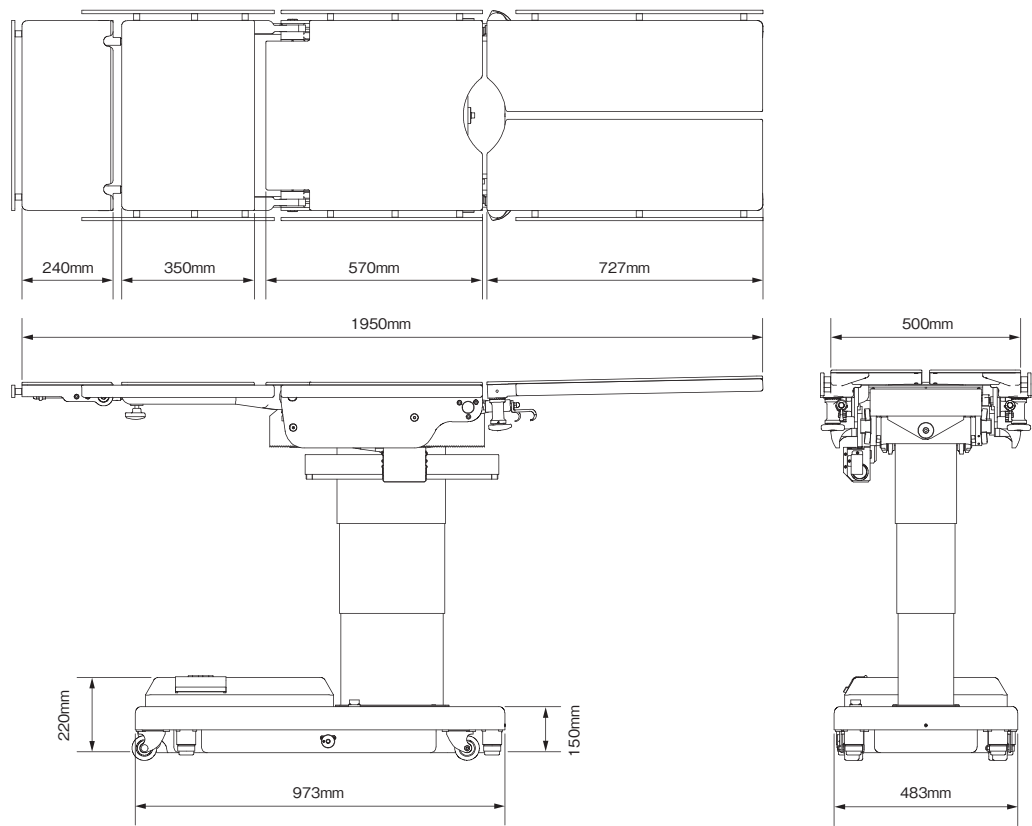
- ◉ Anesthesia Screen
- ◉ Wilson Plus™ Radiolucent Frame
- ◉ ProneView®
- ◉ Armboard for Prone Position

\* Wilson Plus™ Radiolucent Frame and ProneView® are sold by Mizuho OSI



Product Information

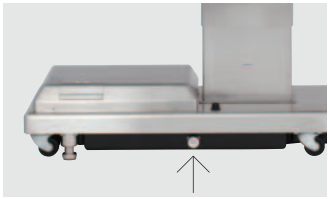
Outer Dimension Drawing



Features



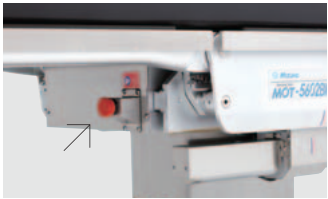
**AUX Switch**  
AUX switch located at the table base for a swift response to malfunctions of the hand controller.



**Emergency Brake Release Knob**  
For releasing the brake manually in case of power outage.



**Battery Indicator**  
Easy-to-read battery indicator for checking the battery level at a glance.



**Emergency Stop Switch**  
For stopping the operation immediately in case of emergency.

Specifications

Product Description	MOT-5602BW
Product Code	JP Side Rail : 18-450-20
	EU Side Rail : 18-450-30
	US Side Rail : 18-450-70
Trade Name	Operating Table MOT-5602BW
Drive System	Electro hydraulic System
Country of Origin	Japan

Technical Specifications

Elevation Range	520 mm - 1000 mm
Trendelenburg	Head Up 25 deg. / Head Down 25 deg.
Lateral Tilt	20 deg. Left / Right
Back Section	90 deg. Up / 40 deg. Down
Table Top Slide	530 mm (220 mm to Head, 310 mm to Leg)
Head Section	60 deg. Up / 90 deg. Down
Leg Section	90 deg. Down / 90 deg. Opening
Return to Level	Trendelenburg / Lateral Tilt
Maximum Permissible Load Elevation	270 kg (600 lbs.)
Maximum Permissible Load Articulation	250 kg (555 lbs.)
Table Top Dimensions	500 mm x 1950 mm
Base Dimensions	973 mm x 483 mm
Table Weights	324 kg
Supply Voltage	100 - 240 V (50 / 60 Hz)
Power Consumption	400 VA
Battery Power	24 V
Operating Voltage	24 V
Standard Accessories	Table Pads / Hand Controller
Power Cord Options	To be selected according to country type

Main Material

Table Plate	Phenolic Resin
Side Rail	Stainless Steel
Side Frame	Aluminum Alloy
Elevation Column (Cover)	Stainless Steel
Base (Cover)	Stainless Steel

Operating Environment

Ambient Temperature	10 to 40 °C
Relative Humidity	30 to 85 %
Atmospheric Pressure	700 to 1060 hPa



Mizuho Chiba Factory

Table Function

